

Gemdale Gold Intersects 148.6m of 0.71g/t gold, including 16.7m of 2.07g/t gold, at its Pontio Gold Project, central Finland

Vancouver, British Columbia --(Sept 8th, 2021) - **Gemdale Gold Inc. (Unlisted)** ("**Gemdale**", "**Gemdale Gold**" or the "**Company**") is very pleased to announce gold assays from the first two holes of the 8 hole, 1259m program completed in May at its 100% owned Pontio Gold Project located in central Finland. In addition, for the first time, results from previous drill programs not yet made public by Gemdale are also presented.

Highlights

- **Hole PONT053** was drilled in April 2021, as an infill hole into the northern part of the M2 Trend at Pontio, and intersected **148.6m @ 0.71g/t gold** starting at a downhole depth of 24.2m, including a higher grade zone of **16.7m @ 2.07g/t gold**.
- **Hole Pont054** was drilled 100m to the south of PONT053 and intersected **32.3m @ 0.52 g/t gold** from 110.5m downhole, in addition to **49.1m @ 0.64 g/t gold** from 153.7m downhole with scattered intervals > 1g/t gold.
- **Gemdale's 2019 and 2020 drill programs, (Pont001-052)**, never before publicly reported, extended the strike of known mineralization by 800m in the north and by 400m in the southern parts of the M2 trend, infilled previously widely spaced holes and also demonstrated gold mineralization on other prospects at Pontio. Some highlights from these programs include:
 - **Hole Pont006 : 76.82m @ 0.88 g/t gold** from 6.6m including 32.20m @ 1.41 g/t gold from 43.42m downhole.
 - **Hole Pont004 : 45.49m @ 0.84 g/t gold** from 31.93m downhole including 14.49m @ 1.54 g/t gold from 31.93m.
 - **Hole Pont028 : 53.85m @ 0.70 g/t gold** from 21.53m downhole including 11.44m @ 1.10 g/t gold from 63.94m
 - **Hole Pont038 : 42.45m @ 0.85 g/t gold** from 59.58m downhole including 19.45m @ 1.30 g/t gold from 60.68m.
- Gemdale's results significantly extend the strike length of gold mineralization at the M2 Trend to almost 3km, building on successful drill results by a previous operator, which included **72.7m @ 0.95g/t gold**, including **14.82m @2.29g/t gold** (BELANP013) and **72.1m @ 0.88g/t** including **39.92m @ 1.13 g/t gold** (BELANP012).

David Pym, President and CEO, comments: "*The 2021 drill campaign at Pontio is designed to grow our understanding on the controls on gold mineralization and extend the results from the earlier drilling campaigns in 2019 and 2020. Results so far are very positive with drilling extending the strike and depth of the known gold mineralization. So far, we have only just scratched the surface, with gold mineralization crudely outlined by shallow, wide spaced drilling at 100-200m profiles. The mineralization is open to depth and along strike. This is a newly identified gold trend (discovered only in 2011), carrying gold mineralization for > 3 kilometers in strike length with excellent potential for*

development, in a stable European country in an area featuring excellent infrastructure and high-quality local skills”.

Further Details:

The Pontio Gold Project is located in central Finland (Figure 1) in an area which features extremely good infrastructure, including paved roads, power lines and rail lines within a few kilometers of all points of the main M2 deposit at Pontio, along with good port access, highly skilled labor and a high level of local services available. Several other mines are present in the region, but gold exploration in the area is still in its infancy; Pontio was only discovered in 2011.

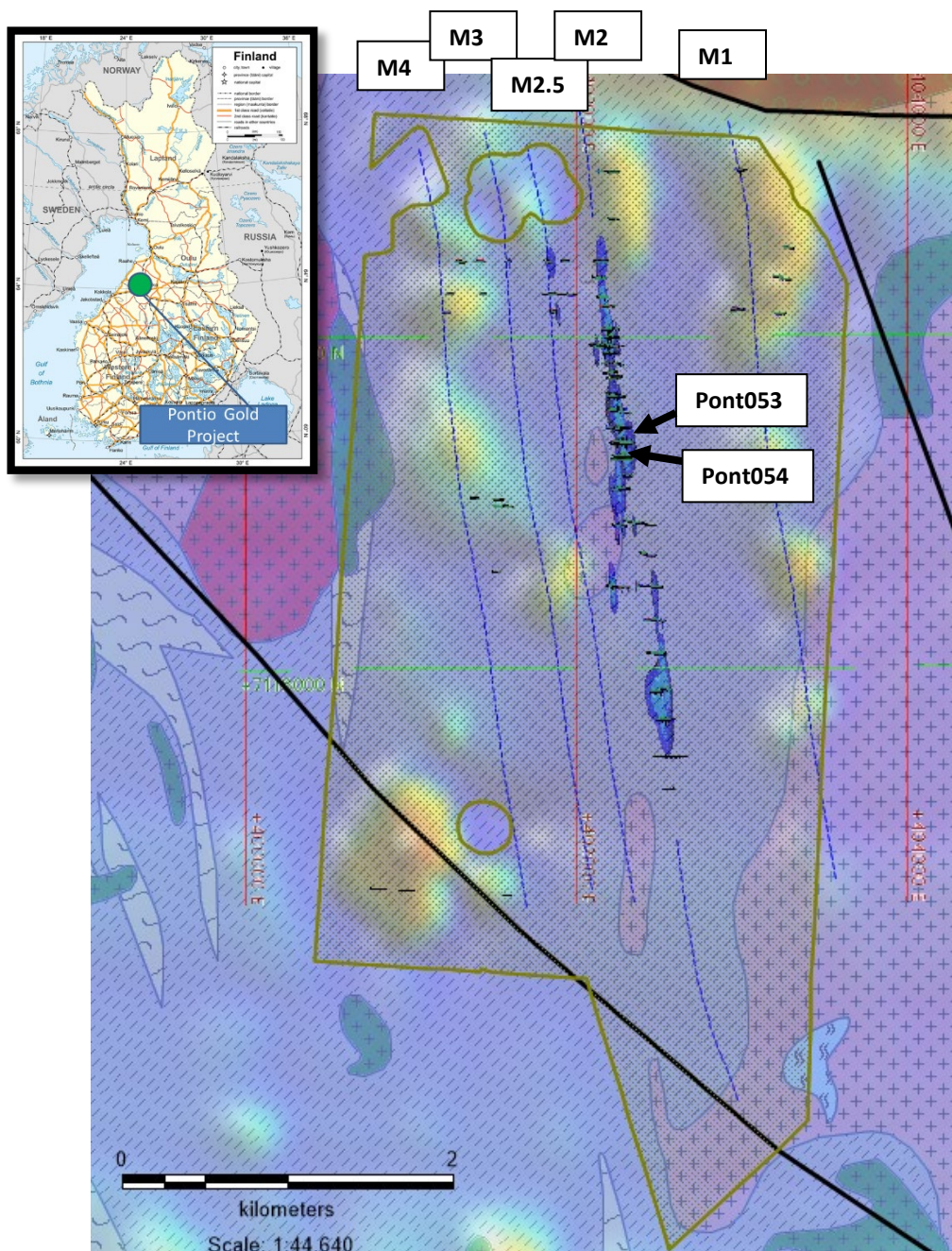


Figure 1: Pontio Project area showing multiple gold trends on geology and airborne magnetics with mineralized envelope in blue and drillhole traces, along with approximate locations for PONT053 and PONT054

Gold mineralization has so far been outlined by drilling over an almost 3km strike length; mineralization subcrops, extends to at least 150m vertical and ranges from 20m to over 100m in true thickness. Gold mineralization is mainly hosted in subvertical dioritic dykes intruding gneissic metasediments that occur in close proximity to the gold bearing structures. The M2 trend is one of a number of identified potential gold bearing structures with the others yet to have significant exploration along their lengths.

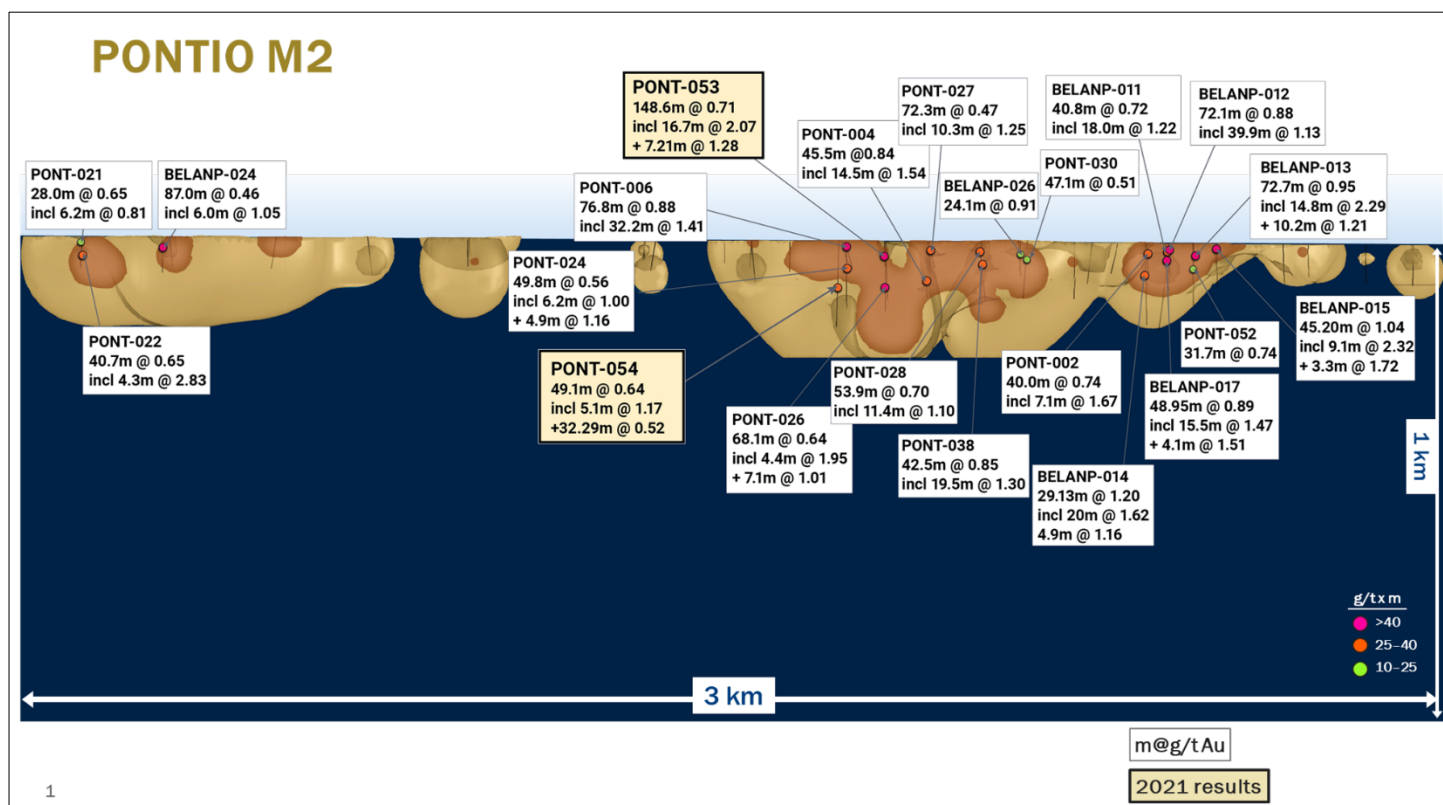


Figure 2: Long Section Showing Drill Highlights Along 3km of the M2 Trend at Pontio

Hole PONT053 was drilled in April 2021, as an infill hole into the northern part of the M2 Trend at Pontio (Figure 1), and intersected 148.58m@0.71g/t gold starting at a downhole depth of 24.18m, including a higher grade zone of 16.66m grading 2.07g/t gold. The hole significantly upgraded the main mineralized intrusive on this section and showed the western diorite host increasing in grade (see section in Figure 2).

Hole Pont054 was drilled 100m to the south of PONT053 and intersected 32.29m @ 0.52 g/t gold from 110.5m downhole in addition to 49.08m @ 0.64 g/t gold from 153.68m downhole with scattered intervals > 1g/t gold, extending the mineralized envelope by 80m down dip to 150m vertical.

Gemdale's 2019 (2206m) drilling program, (Pont001-023), never before publicly reported, extended the strike of known mineralization by 800m in the north and by 400m in the southern parts of the M2 trend. Some highlights of the program include:

- Hole Pont006 intersected 76.82m @ 0.88 g/t gold from 6.6m, including 32.20m @ 1.41 g/t gold from 43.42m downhole.
- Pont004 intersected 45.49m @ 0.84 g/t gold from 31.93m downhole including 14.49m @ 1.54 g/t gold from 31.93m.

The 2020 (2922m) drilling campaign, (Pont024-052), also never before publicly reported, infilled the newly extended strike to 100m spacings in the northern portion of the M2 Trend and also demonstrated that at least two of the other magnetic trends (the M2.5 and M3) are associated with gold mineralization on the test profile drilled, exhibiting low grade halo mineralization typical of the marginal zones on the M2 trend. Some highlights of the program were:

- Pont028, which intersected 53.85m @ 0.70 g/t from 21.53 m downhole including 11.44m @ 1.10 g/t gold from 63.94m
- Pont038, which intersected 42.45m @ 0.85 g/t gold from 59.58m downhole including 19.45m @ 1.30 g/t gold from 60.68m.

While the gold mineralized envelope is generally low grade, it occurs over substantial thicknesses (20m to over 100m) and contains significant wide zones of higher-grade mineralization (see Tables 1 and 2), which Gemdale plans to test for continuity as these zones may plunge to depth.

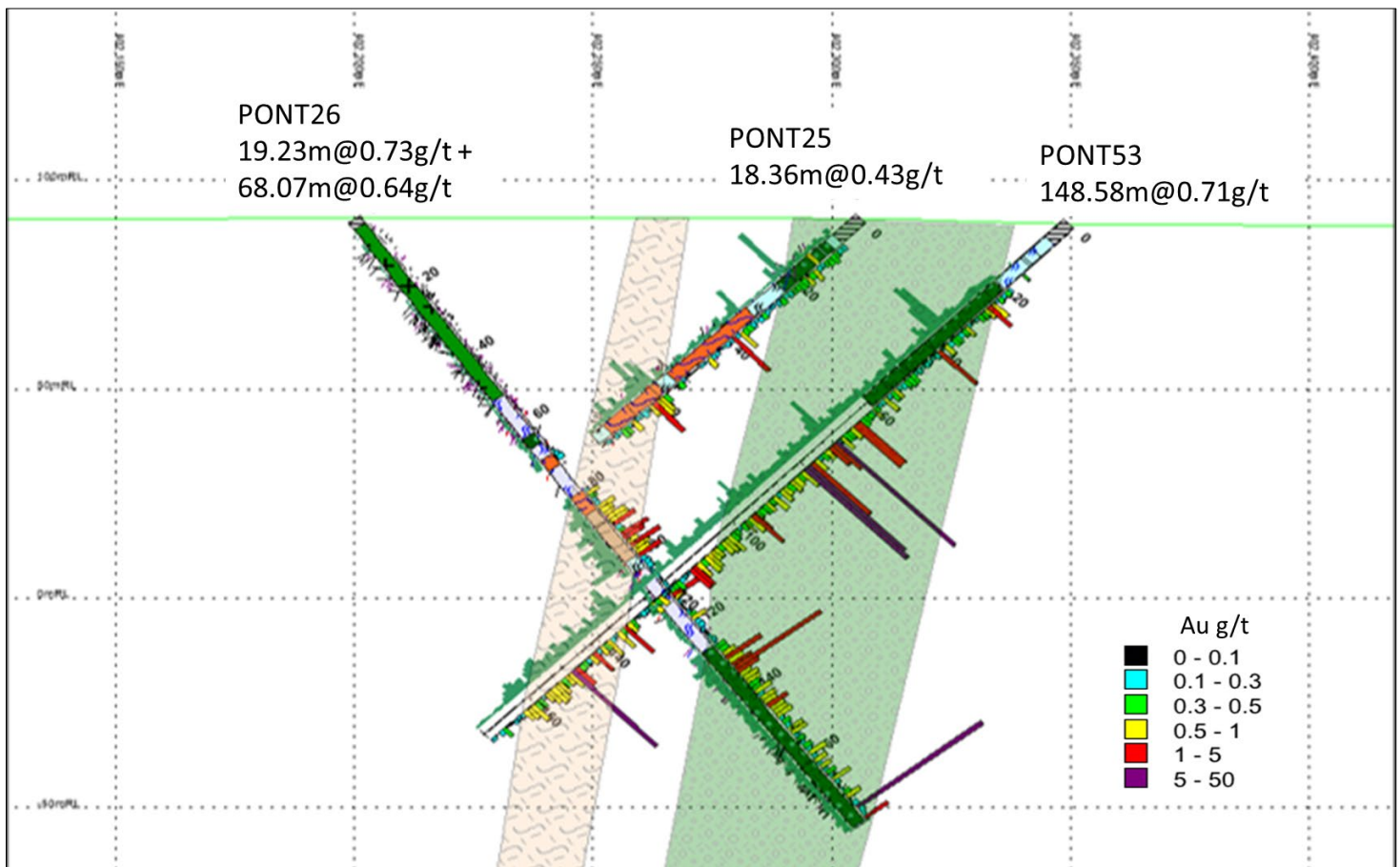


Figure 3: Section 7119250N showing Pont053, Pont025 and Pont026. Host Plagioclase Porphyry (green) and Gneissic Diorite (lt brown) shown.

Summaries of significant results from Gemdale's drilling and also historical intersections by previous operators are presented in Tables 1 and 2 respectively:

Table 1 Significant Drill Results by Gemdale from the Pontio Gold Project

Hole	From	To	Interval	Gold Grade g/t	Grade Thickness	Operator
PONT002	63.60	103.58	39.98	0.74	29.46	Gemdale
incl.	96.47	103.58	7.11	1.67	11.90	Gemdale
PONT004	31.93	77.42	45.49	0.84	38.16	Gemdale
incl.	31.93	46.42	14.49	1.54	22.31	Gemdale
PONT005	34.05	47.36	13.31	0.54	7.24	Gemdale
PONT006	6.58	83.40	76.82	0.88	67.94	Gemdale
incl.	43.42	75.62	32.20	1.41	45.45	Gemdale
PONT007	69.07	92.00	22.93	0.40	9.22	Gemdale
PONT008	6.06	37.11	31.05	0.41	12.78	Gemdale
PONT013	57.80	78.40	20.60	0.51	10.55	Gemdale
PONT020	11.02	45.65	34.63	0.47	16.43	Gemdale
PONT021	10.12	38.10	27.98	0.65	18.15	Gemdale
incl.	26.53	32.72	6.19	0.81	5.03	Gemdale
PONT022	48.95	89.60	40.65	0.65	26.52	Gemdale
incl.	77.81	82.11	4.30	2.83	12.17	Gemdale
PONT023	5.60	37.49	31.89	0.51	16.39	Gemdale
incl.	22.66	27.99	5.33	1.04	5.54	Gemdale
PONT023	53.68	73.00	19.32	0.64	12.42	Gemdale
PONT024	55.94	105.78	49.84	0.56	27.85	Gemdale
incl.	82.91	89.09	6.18	1.00	6.21	Gemdale
PONT025	58.14	76.50	18.36	0.43	7.91	Gemdale
PONT026	81.13	100.36	19.23	0.73	14.02	Gemdale
incl.	93.25	100.36	7.11	1.01	7.21	Gemdale
PONT026	111.23	179.30	68.07	0.64	43.72	Gemdale
incl.	129.91	135.08	5.17	1.78	9.18	Gemdale
incl.	174.92	179.30	4.38	1.95	8.53	Gemdale
PONT027	74.20	146.50	72.30	0.47	34.28	Gemdale
incl.	83.77	94.06	10.29	1.25	12.87	Gemdale
PONT028	21.53	75.38	53.85	0.70	37.44	Gemdale
incl.	63.94	75.38	11.44	1.10	12.54	Gemdale
PONT029	110.00	129.40	19.40	0.92	17.88	Gemdale
incl.	113.26	120.46	7.20	1.45	10.46	Gemdale
PONT030	81.00	128.12	47.12	0.51	24.03	Gemdale
incl.	102.17	108.24	6.07	1.05	6.39	Gemdale
incl.	110.14	115.10	4.96	1.05	5.22	Gemdale
PONT032	56.33	64.60	8.27	0.68	5.62	Gemdale
PONT034	55.90	70.26	14.36	0.46	6.56	Gemdale
PONT038	59.58	102.03	42.45	0.85	36.09	Gemdale
incl.	60.68	80.13	19.45	1.30	25.27	Gemdale

PONT038	143.40	162.00	18.60	0.69	12.81	Gemdale
PONT052	67.02	98.69	31.67	0.74	23.53	Gemdale
incl.	78.21	91.14	12.93	1.32	17.01	Gemdale
PONT053	24.18	172.76	148.58	0.71	104.75	Gemdale
incl.	64.14	80.80	16.66	2.07	34.55	Gemdale
incl.	142.18	149.39	7.21	1.28	9.21	Gemdale
PONT054	110.50	142.79	32.29	0.52	16.73	Gemdale
PONT054	153.68	202.76	49.08	0.64	31.55	Gemdale
incl.	195.67	200.76	5.09	1.17	5.96	Gemdale

Table 2 Significant Drill Results from Pontio drilled by Previous Operator

Historical Holes						
Hole	From	To	Interval	Gold Grade g/t	Grade Thickness	Operator
BELANP011	11.20	51.95	40.75	0.72	29.43	Historical
incl.	27.8	45.84	18.04	1.22	22.07	Historical
BELANP012	8.95	81.05	72.10	0.88	63.13	Historical
incl.	38.10	78.02	39.92	1.13	44.93	Historical
BELANP013	17.95	90.65	72.70	0.95	69.40	Historical
incl.	37.11	47.34	10.23	1.21	12.36	Historical
incl.	53.22	68.04	14.82	2.29	33.93	Historical
BELANP014	25.30	43.15	17.85	0.71	12.71	Historical
incl.	26.26	31.20	4.94	1.16	5.71	Historical
BELANP014	54.12	83.25	29.13	1.20	34.96	Historical
incl.	57.25	77.20	19.95	1.62	32.33	Historical
BELANP015	5.50	50.70	45.20	1.04	46.80	Historical
incl.	27.01	36.07	9.06	2.32	21.02	Historical
incl.	43.26	46.54	3.28	1.72	5.64	Historical
BELANP017	59.73	108.68	48.95	0.89	43.72	Historical
incl.	78.90	83.00	4.10	1.51	6.19	Historical
incl.	91.12	106.63	15.51	1.47	22.81	Historical
BELANP018	49.40	67.81	18.41	0.64	11.73	Historical
incl.	50.35	54.88	4.53	1.17	5.32	Historical
BELANP022	1.74	17.94	16.20	0.44	7.19	Historical
BELANP022	36.54	48.04	11.50	0.49	5.61	Historical
BELANP023	2.13	21.93	19.80	0.63	12.40	Historical
BELANP024	17.37	104.39	87.02	0.46	40.36	Historical
incl.	61.97	67.95	5.98	1.05	6.26	Historical
BELANP026	44.23	68.29	24.06	0.91	21.79	Historical
incl.	44.23	53.13	8.90	1.21	10.76	Historical
incl.	60.02	64.24	4.22	1.69	7.12	Historical

For Table 1 and 2: Bulk intersections are reported at a cutoff grade of 0.4 g/t gold with 10m internal dilution. Higher grade cutoff is 1 g/t gold with 5m internal dilution. Intersections are downhole intersections. True widths are estimated as 65-85% of downhole intersect length. Grade thickness (GT) is calculated as gold grade x interval thickness only intersections with a GT >= 5 are displayed here. Drillhole locations listed in Appendix.

Next Steps

Gemdale is awaiting assay results from 6 additional holes drilled in the early-2021 campaign, which have been drilled both to try to further extend the known gold mineralization along strike and, to some extent, to depth, plus additional geological studies aimed at helping to understand the controls on the mineralization, so that the most prospective zones can be targeted and drilled to depth in the next drill program.

The Company is also working on a portfolio of other high quality precious and base metals projects in Finland, and is planning to bring the Company public, targeting a date later this year.

QA/QC and Core Sampling Protocols

Drill core is logged and sampled in a secure core storage facility located in Ylivieska, Finland. Core samples from the program are cut in half, using a diamond cutting saw, and are sent to ALS Minerals, Outokumpu, an international accredited mineral analysis laboratory, for sample prep and analysis. All samples are analyzed for gold using Fire Assay-AA techniques (method gold-AA23). Samples returning over 10.0 g/t gold are analyzed utilizing Fire Assay-Gravimetric methods (gold-GRA21). As part of Gemdale's quality control/quality assurance program (QA/QC), certified gold reference standards are routinely inserted into the sample stream every 20th sample (5%). A blank sample is also inserted into the sample stream with every batch sent to the laboratory. No QAQC issues were noted with the results reported herein.

Qualified Person and NI 43-101 Disclosure

Dr. Toby Strauss (CGeol.; EurGeol.), Director and COO, is the Qualified Person as defined by National Instrument 43-101. Dr Strauss has verified the data supporting this news release. Verification includes checking a proportion of the reported assays (both the historical and recent assays) in the Company database against the issued laboratory assay certificates. In addition, verification has included checking the location and orientation of the drill collars in the Company database against historic maps and reports. Dr Strauss is responsible for the accuracy of and has approved the technical information contained in this news release.

More About Gemdale Gold

Gemdale Gold Inc. owns a portfolio of highly prospective exploration licenses in Finland, and is focused on making significant new gold discoveries on these properties. The Company's projects include:

- **Pontio**, in central Finland, where Gemdale is expanding the known gold mineralization;
- **Isonева**, also in central Finland, where Gemdale is exploring, in partnership with Centerra Gold Inc., to discover and evaluate the source of high-grade gold found in extensive nearby boulder trains;
- **Lapland (northern Finland)**, where Gemdale is exploring its large scale licenses, in one of the most attractive and exciting new areas for gold exploration in the world. These licenses are located close to other gold discoveries of major significance in Lapland; and
- **Kumiseva**, in central Finland, where Gemdale has identified a group of very interesting Cu-Ni-PGM prospects.

ON BEHALF OF GEMDALE GOLD INC

"David Pym"
President & CEO

For Further Information Please Contact:

Mr. Paul Durham, MSc.
Director and EVP Investor Relations
Cell: +1 203-940 2538
Email: pdurham@3ppb.com

Mr. Patrick Chidley, MS, CFA
Executive Chairman
Cell: +1 917-991 7701
Email: pchidley@3ppb.com

Forward Looking Statements:

Securities regulators have not reviewed the information disclosed in this press release and no securities regulator accepts responsibility for the adequacy or accuracy of this news release.

This news release includes certain "forward-looking statements" which are not comprised of historical facts. Forward-looking statements include estimates and statements that describe the Company's future plans, objectives or goals, including words to the effect that the Company or management expects a stated condition or result to occur. Forward-looking statements may be identified by such terms as "believes", "anticipates", "expects", "estimates", "may", "could", "would", "will", or "plan". Since forward-looking statements are based on assumptions and address future events and conditions, by their very nature they involve inherent risks and uncertainties. Although these statements are based on information currently available to the Company, the Company provides no assurance that actual results will meet management's expectations. Risks, uncertainties and other factors involved with forward-looking information could cause actual events, results, performance, prospects and opportunities to differ materially from those expressed or implied by such forward-looking information. Forward looking information in this news release includes, but is not limited to, the Company's objectives, goals or future plans, statements, exploration results, potential mineralization, the estimation of mineral resources, exploration and mine development plans, timing of the commencement of operations and estimates of market conditions. Factors that could cause actual results to differ materially from such forward-looking information include, but are not limited to failure to identify mineral resources, failure to convert estimated mineral resources to reserves, the inability to complete a feasibility study which recommends a production decision, the preliminary nature of metallurgical test results, delays in obtaining or failures to obtain required governmental, environmental or other project approvals, political risks, an inability to predict and counteract the effects of COVID-19 on the business of the Company, including but not limited to the effects of COVID-19 on the price of commodities, capital market conditions, restrictions on labour and international travel and supply chains, uncertainties relating to the availability and costs of financing needed in the future, changes in equity markets, inflation, changes in exchange rates, fluctuations in commodity prices, delays in the development of projects, capital and operating costs varying significantly from estimates and the other risks involved in the mineral exploration and development industry. Although the Company believes that the assumptions and factors used in preparing the forward-looking

information in this news release are reasonable, undue reliance should not be placed on such information, which only applies as of the date of this news release, and no assurance can be given that such events will occur in the disclosed time frames or at all. The Company disclaims any intention or obligation to update or revise any forward-looking information, whether as a result of new information, future events or otherwise, other than as required by law.

ANNEXURE 1: Location of Pontio Drillholes

Hole	UTM East	UTM North	UTM Elevation	Azimuth	Dip	Length m	Company
BELANP001	403262.3	7120134.3	84.9	268.70	-45	89.30	Historical
BELANP002	402931.6	7120148.3	83.4	95.80	-45	44.35	Historical
BELANP003	403013.8	7120160.0	85.9	273.80	-45	102.65	Historical
BELANP004	403291.9	7120338.2	82.1	275.10	-45	76.75	Historical
BELANP005	403245.1	7120352.5	82.0	279.10	-45	79.90	Historical
BELANP006	403310.6	7120527.5	81.3	277.70	-45	80.55	Historical
BELANP007	403011.2	7121003.4	81.0	272.90	-45	77.35	Historical
BELANP008	402187.5	7120992.1	82.0	92.60	-45	98.60	Historical
BELANP009	402184.2	7120992.2	81.9	273.10	-45	83.22	Historical
BELANP010	402255.0	7120702.3	82.9	277.00	-45	90.05	Historical
BELANP011	402191.3	7119942.6	85.1	267.80	-45	85.85	Historical
BELANP012	402225.8	7119940.2	85.5	271.30	-45	119.45	Historical
BELANP013	402230.5	7119992.3	86.9	271.20	-45	90.65	Historical
BELANP014	402223.0	7119894.3	85.7	273.00	-45	83.25	Historical
BELANP015	402220.6	7120038.5	85.3	269.20	-45	89.15	Historical
BELANP016	403032.4	7121002.4	80.7	267.00	-45	76.45	Historical
BELANP017	402263.6	7119934.8	86.2	271.50	-45	139.90	Historical
BELANP018	402249.3	7120040.4	85.5	272.20	-45	128.20	Historical
BELANP019	402159.4	7119940.6	84.1	270.60	-45	98.20	Historical
BELANP020	402225.3	7120179.4	86.9	271.00	-45	122.10	Historical
BELANP021	402242.1	7119780.6	86.9	263.60	-45	119.15	Historical
BELANP022	402253.7	7119627.3	93.0	270.20	-45	89.45	Historical
BELANP023	402220.5	7118483.6	97.9	273.20	-45	55.55	Historical
BELANP024	402522.8	7117845.0	99.0	268.20	-45	104.40	Historical
BELANP025	402327.4	7119529.2	89.2	273.40	-45	42.90	Historical
BELANP026	402290.8	7119631.2	90.4	268.30	-45	101.45	Historical
BELANP027	402200.9	7119832.4	85.6	269.40	-45	70.25	Historical
BELANP028	402192.7	7120231.4	83.2	269.20	-45	95.45	Historical
PONT001	402258.6	7120037.5	86.5	278.60	-70	113.75	Gemdale
PONT002	402242.9	7119891.9	87.8	272.00	-65	190.70	Gemdale
PONT003	402244.8	7119441.6	90.7	273.50	-45	95.50	Gemdale
PONT004	402294.8	7119441.7	90.1	281.90	-45	77.42	Gemdale
PONT005	402278.5	7119258.6	91.9	286.90	45	80.50	Gemdale
PONT006	402326.2	7119266.7	90.6	285.40	-45	83.40	Gemdale
PONT007	402323.8	7119071.3	91.5	275.80	-45	130.00	Gemdale
PONT008	402271.4	7119072.3	92.2	265.00	-45	80.50	Gemdale

PONT009	402348.7	7118861.6	92.8	291.90	-45	95.00	Gemdale
PONT010	402401.1	7118871.3	91.9	260.60	-45	89.50	Gemdale
PONT011	402433.4	7118671.3	94.7	289.20	-45	83.80	Gemdale
PONT012	402477.6	7118668.7	93.5	269.90	-45	82.20	Gemdale
PONT013	402515.8	7118479.2	94.5	271.60	-45	80.80	Gemdale
PONT014	402465.8	7118482.2	97.1	270.30	-45	77.90	Gemdale
PONT015	402415.9	7118483.4	99.2	270.00	-45	75.00	Gemdale
PONT016	402323.7	7118480.3	100.7	270.40	-45	152.30	Gemdale
PONT017	402463.1	7118275.1	99.3	270.60	-45	77.60	Gemdale
PONT018	402535.0	7118271.7	99.9	277.00	-45	110.90	Gemdale
PONT019	402480.5	7118077.3	99.1	272.80	-45	74.00	Gemdale
PONT020	402536.4	7118080.9	98.4	261.60	-45	92.70	Gemdale
PONT021	402542.4	7117676.1	100.2	266.10	-45	86.50	Gemdale
PONT022	402593.0	7117678.2	99.9	266.70	-45	89.60	Gemdale
PONT023	402566.7	7117859.2	99.9	275.60	-45	86.10	Gemdale
PONT024	402352.5	7119269.4	89.8	270.40	-55	170.90	Gemdale
PONT025	402306.0	7119348.4	90.7	271.00	-45	76.50	Gemdale
PONT026	402200.1	7119351.0	90.5	90.20	-55	179.30	Gemdale
PONT027	402321.4	7119437.9	90.1	269.30	-55	146.50	Gemdale
PONT028	402216.6	7119549.2	91.1	89.20	-45	80.50	Gemdale
PONT029	402182.2	7119547.9	90.7	83.60	-55	147.20	Gemdale
PONT030	402178.9	7119646.8	92.5	95.50	-55	149.80	Gemdale
PONT031	402214.5	7119749.1	89.7	88.50	-45	80.60	Gemdale
PONT032	402179.6	7119744.2	89.9	90.10	-55	146.50	Gemdale
PONT033	402214.0	7119834.6	87.1	102.40	-45	91.30	Gemdale
PONT034	402080.0	7119943.8	85.3	100.50	-55	223.10	Gemdale
PONT035	402255.8	7118848.5	92.7	93.70	-45	58.80	Gemdale
PONT036	402220.0	7118850.0	92.0	90.30	-45	55.70	Gemdale
PONT037	402343.2	7119151.3	90.2	269.70	-45	88.60	Gemdale
PONT038	402305.1	7119549.8	91.3	271.20	-55	162.00	Gemdale
PONT039	402098.9	7120351.1	84.6	89.90	-45	113.80	Gemdale
PONT040	402106.8	7120450.4	83.6	90.00	-45	121.30	Gemdale
PONT041	401934.6	7120247.5	85.1	90.50	-45	56.10	Gemdale
PONT042	401842.9	7120144.3	86.1	89.90	-45	50.30	Gemdale
PONT043	401828.1	7120250.1	87.8	89.50	-45	64.50	Gemdale
PONT044	401909.5	7120449.6	85.1	89.80	-45	64.50	Gemdale
PONT045	401806.6	7120446.1	84.1	90.00	-45	53.10	Gemdale
PONT046	401567.7	7120448.6	86.6	90.70	-45	49.60	Gemdale
PONT047	401387.6	7120448.3	88.6	89.60	-45	68.10	Gemdale
PONT048	401414.8	7120250.8	87.0	90.10	-45	58.80	Gemdale
PONT049	401261.3	7120447.8	90.1	91.40	-45	87.90	Gemdale
PONT050	401206.4	7120249.9	91.8	90.10	-45	61.60	Gemdale
PONT051	401235.9	7120143.5	92.8	270.10	-45	57.40	Gemdale
PONT052	402258.4	7119990.8	87.7	270.20	-55	158.00	Gemdale

PONT053	402349.5	7119351.3	89.5	271.40	-45	172.76	Gemdale
PONT054	402204.1	7119253.2	92.9	91.70	-55	223.64	Gemdale
PONT055	402286.8	7119937.5	88.7	271.30	-50	250.30	Gemdale
PONT056	402666.8	7117451.8	101.4	270.30	-45	68.00	Gemdale
PONT057	402570.7	7117451.3	100.8	270.00	-45	145.90	Gemdale
PONT058	402623.1	7117448.6	101.8	269.80	-45	146.70	Gemdale
PONT059	402516.6	7117252.6	101.5	91.30	-45	106.40	Gemdale
PONT060	402479.3	7118851.4	91.6	273.90	-50	145.70	Gemdale